



**Global Plant Service** Co.,Ltd.

GPS will become an excellent  
Navigator to achieve your goals

***Inspection / Expediting / Procurement Service for industrial equipment***

## **Company Profile**

# 1

# Introducing

## ► Introduction

Global Plant Service (GPS) works closely in partnership with major leading EPC and Final Clients in Power Plant and Oil & Gas Industries. Our network of trusted representatives provide domestic & worldwide inspection, expediting, and procurement services.

## ► Mission

Committed to providing solution to customers in power plant industries through capable resources, with responsible supervision and reliable processes across the world at reasonable price.

## ► Vision

Our vision is to reach out to every part of the world and expand our services to various sectors using our standards and become the most trusted name in Quality and Services.

# 2

## About Global Plant Service (GPS)

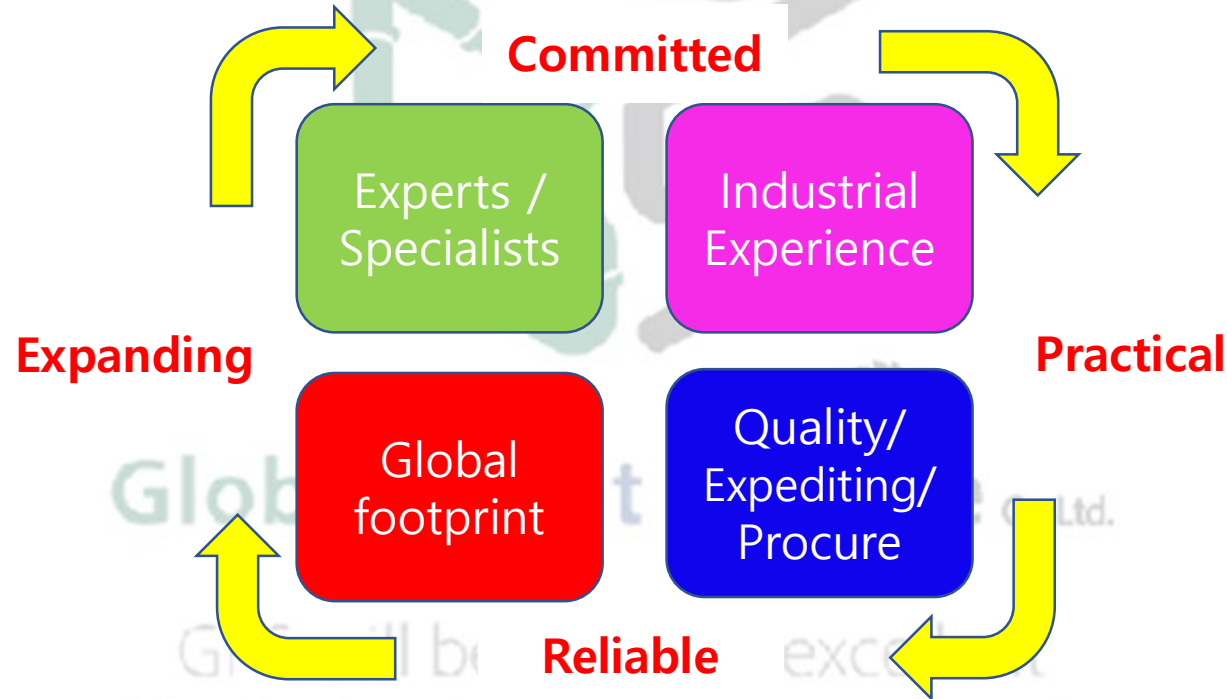
- ▶ We at Global Plant Service CO., LTD, located in Changwon city in the Republic of Korea, have grown its capabilities to provide end to end post-order management services to our customers worldwide.
- ▶ We are committed to every client, capable of handling any assignment, reliable to deliver on time, take responsible actions, at reasonable price.
- ▶ We have expanded and developed ourselves into delivering management services consisting of;
  - Procurement service for industrial materials and equipment.
  - Quality Inspection.
  - Project Management and Expediting.
  - QA/QC Consulting.
  - Supplier Quality Surveillance & Audit
  - Local Manpower Consulting & Site repair work.
  - Residential Life & Housing

Global Plant Service Co.,Ltd.  
GPS will become an excellent  
Navigator to achieve your goals

# 3

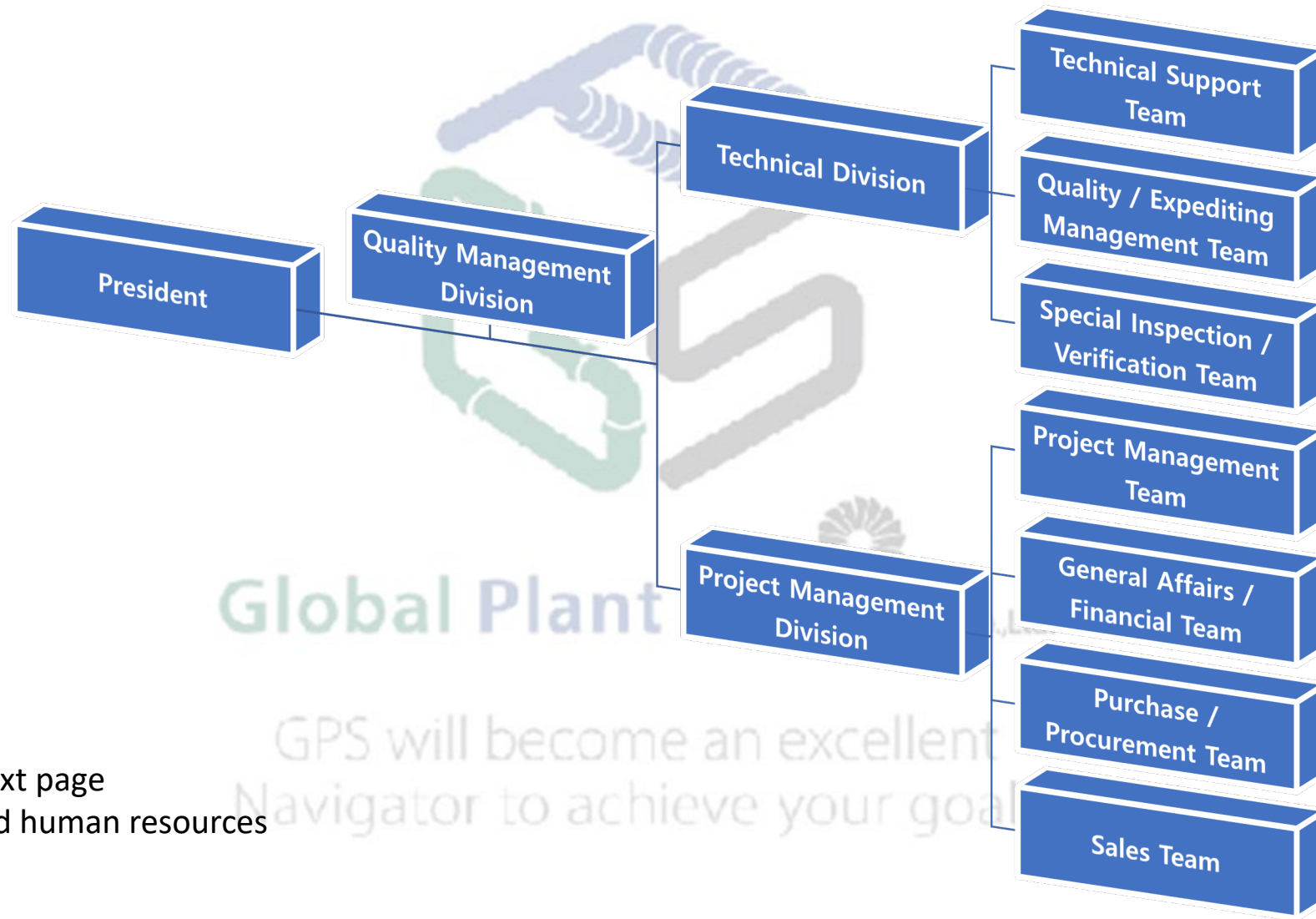
## Why GPS ?

- ▶ GPS has expanded it's global footprint by providing reliable procurement services, inspection, expediting to every customers worldwide at reasonable price, with committed experts/specialists with practical industrial experience.



# 4

## Organization



\* Please refer to next page  
for certificates and human resources

# 5

## Certificates

ISO 9001 : 2015 Certificate

Confirmed and Certified by

ABS Quality Evaluations Inc.

In Huston, U.S

Procurement/Operation and Inspection  
Management Service for Various Projects.

### ABS Quality Evaluations

#### Certificate Of Conformance

This is to certify that the Quality Management System of:

**Global Plant Service**  
**Nexzon 710, SK technopark, 50, Wanam-ro, Seongsan-gu, Changwon-si**  
**Gyeongsangnam-do**  
**Korea**

has been assessed by ABS Quality Evaluations, Inc. and found to be in conformance with the requirements set forth by:

**ISO 9001:2015**

The Quality Management System is applicable to:

**PROCUREMENT, OPERATION AND INSPECTION MANAGEMENT SERVICES FOR VARIOUS PROJECT.**

This certificate may be found on the ABS QE Website ([www.abs-qe.com](http://www.abs-qe.com)). For certificates issued in the People's Republic of China information may also be verified on the CNCA website ([www.cnca.gov.cn](http://www.cnca.gov.cn)).

Certificate No:	56965
Certification Date:	12 April 2018
Effective Date:	04 October 2018
Expiration Date:	11 April 2021
Issue Date:	04 October 2018

*Alex Weisselberg*

Alex Weisselberg, President



Validity of this certificate is based on the successful completion of the periodic surveillance audits of the management system defined by the above scope and is contingent upon prompt, written notification to ABS Quality Evaluations, Inc. of significant changes to the management system or components thereof.

ABS Quality Evaluations, Inc. 16855 Northchase Drive, Houston, TX 77060, U.S.A.  
Validity of this certificate may be confirmed at [www.abs-qe.com/cert\\_validation](http://www.abs-qe.com/cert_validation).

Copyright 2011-2018 ABS Quality Evaluations, Inc. All rights reserved.



# Certificates

Certificate of Technical  
Achievement

Certified by

NICE Dun & Bradstreet In Korea  
(Commercial Credit Bureau)

## 우수기술기업 인증서

Certificate of Technical Achievement

(주)글로벌플랜트서비스

사업자번호 : 135-88-00809

대표자명 : 김재윤

기술분류 : (700206)시험/검사/분석기법

핵심기술명 : 플랜트 설비 검사 기술

주소 : 경상남도 창원시 성산구 원암로 50, 넥스동 710호  
(성산동, SK테크노파크)

위 기업은 나이스디앤비의 기술평가 결과  
기술경쟁력 및 기술사업역량이  
우수한 기업임을 인증합니다.



인증일자 : 2021.01.27

유효기간 : 2021.01.27~2022.01.26

(주)나이스디앤비 대표



# 7

## List of Services

- ▶ Global Plant Service(GPS) provides a comprehensive range of services to assure its customers that their purchased materials and equipment are in compliance with specification requirements and are delivered in a timely manner.
- ▶ GPS provides following services;
  - Procurement service for industrial materials and equipment.
  - Quality Inspection
  - Expediting
  - Manufacturing and QA/QC Consulting
  - Supplier Quality Surveillance & Audit
  - Local Manpower Consulting
  - Residential Life & Housing
- ▶ Details of each services mentioned above will be provided on the following pages.



# 8

## Procurement Services.

- ▶ GPS is able to provide procurement and project management services in quality-wise and budget-wise. Our data pool of vendors and manufacturers can recommend most suitable suppliers that our clients require for specific projects.
- ▶ The scope of this services includes following;
  - Supplying for industrial materials and equipment.
    - > Plate, Pipe, Valve, Bolt, forging & casting material, Instrument ,etc.
    - > Boiler equipment, Vessels, Heat Exchanger, Steel Structure, Plant Piping, etc.
  - Recommendation of vendors and manufacturers.
  - Making contract on behalf of the customers.

Global Plant Service Co.,Ltd.

GPS will become an excellent  
Navigator to achieve your goals

# 9


## Inspection Services

- ▶ GPS is focused on technical inspection.

The most requested service is the inspection of mechanical and electrical equipment at workshop and these assignments are carried out as residence, semi-residence or spot basis ("on call"), as per client's requisition.

- ▶ GPS provides following inspection services (but, not limited to these)

- Pre – Inspection Meetings (PIM)
- Material inspection (Included Material Certificate Review)
- Attendance on ITP specified tests during fabrication (NDE, pressure tests, running tests, etc.)
- Welding Inspection and Visual & Dimensional Inspection
- Final inspection & Technical Assessment
- Coating and Packing Inspection
- FAT Test (Factory Acceptance Test)
- Documental review
- Among Others

  
**Global Plant Service** Co.,Ltd.  
GPS will become an excellent  
Navigator to achieve your goals

# 10

## Inspection Services

- ▶ GPS complies with internal rigorous procedures with an approach to the excellence: meticulous work and well detailed reports are our distinctive.
- ▶ These types of services are subjected to the tightly follow up of an ITP, which establishes the procedures, standards or specifications to comply for testing and defining the acceptance criteria.
- ▶ GPS can develop ITP and for our clients. This service is provided by our consultancy staff.

  
**Global Plant Service** Co.,Ltd.

GPS will become an excellent  
Navigator to achieve your goals

# 11


## Expediting Services

- ▶ GPS provides experts specializing in expediting field who keep track of the delivery dates, supervise progress at workshop and check whether the components are properly packed and shipped. Expediting services refers to all the activities necessary to make sure that the delivery date agreed with the client by the supplier is respected and met
- ▶ Expediting is very powerful management technique required in all major projects, because a delay caused by late delivery or lower quality will get very expensive and could lead to unsatisfied clients, thus the loss of a project. To save these unnecessary costs and minimize potential risks, the clients may make use of a third party expeditor.
- ▶ As per clients requisition, GPS expedites suppliers in order to verify the following;
  - Supplier & Project Documentation
  - Material Procurement and Receiving Status (Material Availability)
  - Production and Assembly
  - Work Progress Analysis (Any delay could be found and prevented)
  - Inspection & Testing
  - Shipment

# 12

## Inspection & Expediting Coverage

- Pipe fabrication / Welding
- Vessels and Heaters
- Tanks
- Boilers / Turbines
- Pipelines
- Petrochemical Industry
- Refineries
- Electrical
- Instrumentation
- Pump with Motors
- Steel Structures
- FRP Piping , Ceramic Lined Piping.

  
Global Plant Service Co., Ltd.

GPS will become an excellent  
Navigator to achieve your goals

# 13

## Human Resources

- ▶ GPS has a total number of over 40 well experienced and qualified personnel specialized in all sectors of Manufacturing, Welding , Quality Assurance, Quality Control Inspection, Project Expediting & Management, Supplier Quality Surveillance & Audit, and Procurement Services.
- ▶ 14 members (regular employees) employed in GPS can speak languages (English with either Chinese or Japanese) well.
- ▶ The table below is a part of Employee Status Control sheets. Please Contact us for more.

# Summary of Employee Status

No.	Name	Experience Inspection & Expediting Item										Language			Kind of Certification										Remark
		B L R	H R S G	N P P	B O P	C O N	P H T	S T R	T B	P V F	A F C	ENG	JPN	CHN	WELD				NDE				Paint	Safety	
															IWE	CWI	CSWIP	API570	RT	UT	MT	PT			
1	Seo, **	√	√	√	√	√	√	√		√		O	O						√	√	√	√	NACE(L2)		Corrosion Engineer
2	Lee, **	√	√	√		√	√	√	√	√		O	O						√	√	√	√			ASNT NDT LEVEL II
3	Park, **		√		√			√		√	√	O		O		√		√	√	√	√		NEBOSH IGC		ASNT NDT LEVEL II
4	Chun, **	√	√		√	√	√	√		√		O	O												
5	Choi, **	√	√	√	√	√	√	√		√	√	O			√	√			√	√	√	√			ASNT NDT LEVEL II
6	Kim, **	√	√		√		√	√		√	√	O				√			√	√	√	√			ASNT NDT LEVEL II
7	Lee, **	√	√	√	√	√	√	√	√	√		O	O			√			√	√	√	√			ASNT NDT LEVEL III
8	Choi, **	√	√		√		√	√		√	√	O				√			√	√	√	√			ASNT NDT LEVEL III
9	Park, **	√	√			√	√	√		√		O				√							NACE(L3)		Painting Spacial list
10	Lee, **				√		√	√		√		O											FROSIO(L3)		Painting Spacial list
11	Hwang, **	√	√			√	√	√	√	√		O	O							√	√	√			
12	Hwang, **	√		√	√		√	√		√		O	O												

\* Remark

BLR : Header, Panel, Coil, Steam drum (Boiler)

HRSG : Harp/Header, Module, Piping & Link, Steam drum

NPP : Nuclear & Power Plant

BOP : HP/LP Heater, Deaerator &STG, CCW

CON : Condenser

PHT : Pressure Vessel, Tower & Column

AFC : Air Fin Cooler

TB : Turbine (Steam, Gas)

PVF : Power Piping, Valve, Fitting

STR : Steel Structure (Casing etc.)



# 14

## Inspector's Individual Certification

- GPS's employees have following certificates in various fields and try to extend toward wider areas.

Specialty	Type of Certification	Certified By
➤ <b>Welding Engineer</b>	- International Welding Engineer (IWE)	Korean Welding & Joining Society
➤ <b>Welding Inspector</b>	- Welding Inspector (CWI, CSWIP3.1)	American Welding Society (AWS)
		TWI Certification Ltd
➤ <b>Non-destructive Testing</b>	- ASNT NDT Level III RT,UT - ASNT NDT Level II RT,UT,MT,PT	The American Society for Nondestructive Testing
➤ <b>API 510</b>	- Pressure Vessel Inspector	American Petroleum Institute
➤ <b>API 570</b>	- Piping Inspector	American Petroleum Institute
➤ <b>Painting</b>	-FROSIO	The Norwegian Professional Council
	- Advanced Coating Inspector (Equivalent to NACE Level 2)	Korean Association of Coating Engineer
➤ <b>Corrosion</b>	- Corrosion Engineer	The Corrosion Science Society of Korea
	- Insulation Inspector	Institute of Corrosion
	- Fire Proofing Inspector	Institute of Corrosion
➤ <b>Safety and Health</b>	- The National Examination board in Occupational Safety and Health (Nebosh)	England & Wales

# 15

## Manufacturing and QA/QC Consulting Service

▶ GPS provides Manufacturing and QA/QC consulting services as categorized below.

- WPS/PQR consulting services.
- ITP & Quality Plan Development.
- Specification & Procedure Development.
- Technical Assistance & Advise
- Training & Qualification
- METI Code (電気事業法)



Global Plant Service Co.,Ltd.

GPS will become an excellent  
Navigator to achieve your goals

# 16

## Supplier Surveillance and Audit Services

- ▶ Our quality specialists support our Clients in auditing, evaluation and assessment of their supplier's facilities and quality management system. This service can be tailored to comply with any standard of our client requirement.
- ▶ The supplier surveillance and audit services are generally conducted prior to the award of a purchase order or contract requirement and these information can be used as the basis of evaluation.
- ▶ Also these appraisal activities consist of a systematic investigation to ascertain the supplier's manufacturing and quality assurance capability.
- ▶ The scope of supplier surveillance and audit services includes following;
  - Due Diligence
  - Verification of Quality Management System
  - Vendor Assessment & Qualification
  - Factory Capability Audit

# 17

## Local Manpower Consulting Services

- ▶ GPS provides services of manpower consultancy, job placement and recruitment in the field of Power Plant and Oil & Gas Industries.
- ▶ GPS offers manpower services which are closely related to following sectors.
  - Design
  - Quality Assurance Program
  - Quality Control Inspection
  - Fabrication & Assembly
  - Administration & Documents control.
  - Health, Safety & Environment (HSE).
- ▶ Recruitment service provides professionals which includes Designers, Engineers, Inspectors, Safety Personnel, Technicians, Electricians, Operators, Supervisors, Technical Advisors, Foremen, Fabricators, Welders, and a variety of manpower needed for your jobs.

# 18

## Residential Life & Housing Services

- ▶ Execute rental services for the latest modern house or accommodation which located near convenient and GPS also can supply any other social convenient life services if customers need.
- ▶ GPS provides following services;
  - Reservation services for hotel, taxi and vehicle
  - Rental services for accommodation, vehicle and Etc.
  - Personal health care support
  - Office & IT support
  - Other miscellaneous

  
Global Plant Service Co., Ltd.

GPS will become an excellent  
Navigator to achieve your goals

# 19

## Customers

- ▶ MITSUBISHI-HITACHI POWER SYSTEMS - KOREA
- ▶ MITSUBISHI-HITACHI POWER SYSTEMS - TAKASAGO
- ▶ MITSUBISHI-HITACHI POWER SYSTEMS - NAGASAKI
- ▶ MITSUBISHI-HITACHI POWER SYSTEMS - YOKOHAMA
- ▶ MITSUBISHI-HITACHI POWER SYSTEMS - KURE
- ▶ MITSUBISHI-HITACHI POWER SYSTEMS - INDIA
- ▶ NOOTER/ERIKSEN S.r.l - ITALY
- ▶ TURBODEN S.p.A - ITALY
- ▶ TOSHIBA - KEHINE
- ▶ TUV RHEINLAND.
- ▶ JAPANESE INSPECTION CORPORATION CO., LTD.
- ▶ IHI INSPECTION & INSTRUMENTATION CO., LTD.

  
Global Plant Service Co., Ltd.



► **Contact us, Global Plant Service Co.,Ltd.**

- Address: Nexzone 710, SK technopark, 50 Wanam-ro, Seongsan-gu, Changwon-si, Gyeongsangnam-do, Republic of Korea.  
(Zip code: 51004)
- Tel.: +82-(0)55-312-8687
- E-mail: [gps-info@gpsk.co.kr](mailto:gps-info@gpsk.co.kr)

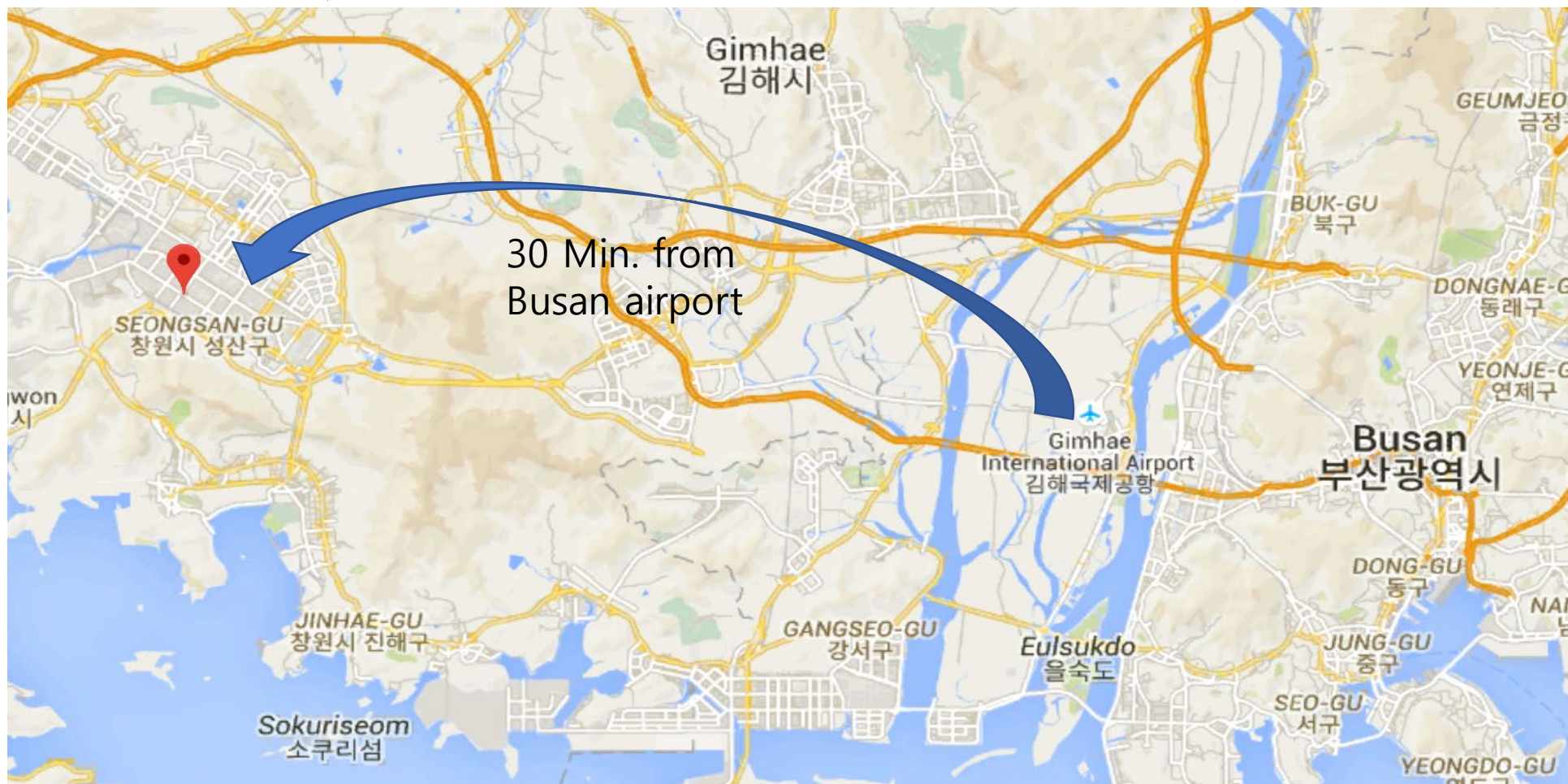
► **Mr. Jae-yun Kim (President) – Correspondence in Japanese.**

- Mobile: +82-(0)10-8881-1317
- E-mail: [jae-yun.kim@gpsk.co.kr](mailto:jae-yun.kim@gpsk.co.kr)

► **Mr. Jin-Won Seo (Deputy manager) – Correspondence in English.**

- Mobile: +82-(0)10-9167-7641
- E-mail: [jin-won.seo@gpsk.co.kr](mailto:jin-won.seo@gpsk.co.kr)

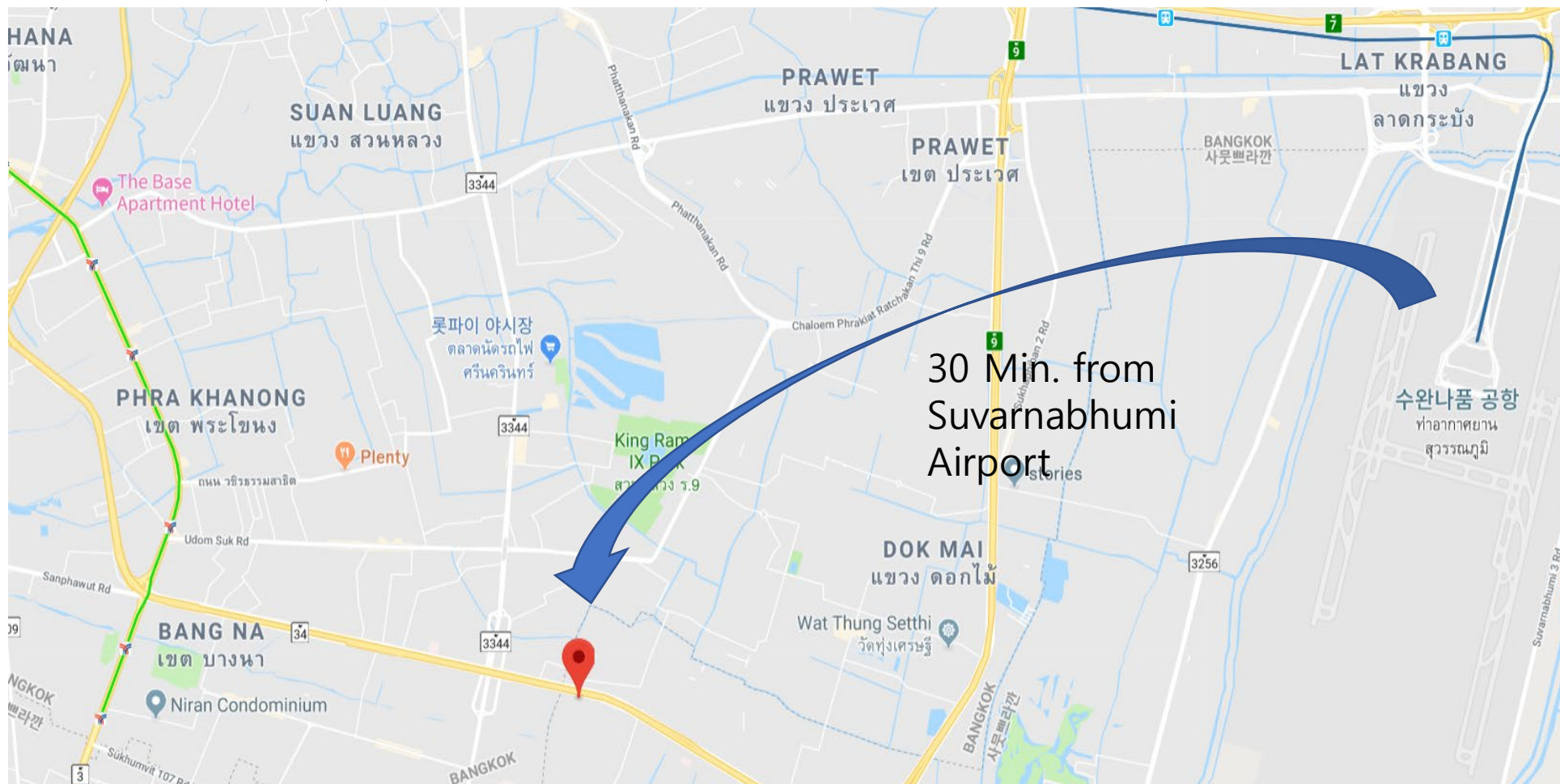
# Contacts (GPS Korea): HEAD OFFICE



- Address: Nexzone 710, SK technopark, 50 Wanam-ro, Seongsan-gu, Changwon-si, Gyeongsangnam-do, Republic of Korea.  
(Zip code: 51004)



# Contacts (GPS Thailand) : Thailand Branch



- Address: Plex Bangna 90/122 Moo 15, Bangkaew Subdistrict, Bang Phli District, Samut Prakan 10540